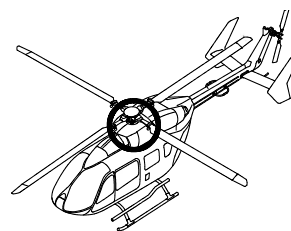
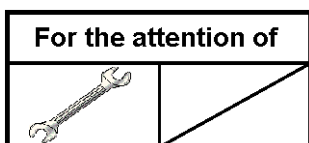




ALERT SERVICE BULLETIN

SUBJECT: AIRWORTHINESS LIMITATIONS - Time Change Items

Change of Life Limits
ATA: 04



Revision No.	Date of issue
Revision 0	2017-04-27

Summary:

The life time of certain components/parts changes due to recalculations. This Alert Service Bulletin (ASB) introduces new life times.

Compliance:

Compliance with this ASB is mandatory.

1. PLANNING INFORMATION

1.A. EFFECTIVITY

1.A.1. Helicopters/installed equipment

(a) MBB-BK117 C-2, C-2e, all S/N.

(b) Nut	P/N	B622M1003201
Quadruple nut upper	P/N	B622M1004201
Quadruple nut lower	P/N	B622M1005201
Bolt	P/N	B622M1006201
		B622M1007201
Inner sleeve	P/N	B622M1009201
Control ring assy	P/N	B623M2001101
Bellcrank-K (collective)	P/N	B670M7021201
Forked lever	P/N	B671M7007201
		B671M7007205
Control tube	P/N	B291M1015201

1.A.2. Non-installed equipment

See Section 1.A.1.

1.B. ASSOCIATED REQUIREMENTS

Not applicable.

1.C. REASON

The life time of certain components/parts changes because of recalculations. This ASB introduces new life times.

1.D. DESCRIPTION

Confirm the newly introduced life limits by an entry in the list of life-limited parts and in the corresponding log cards.

1.E. COMPLIANCE**1.E.1. Compliance at the works**Helicopters/installed equipment:

Until the distribution of the MSM MBB-BK117 C-2:

- Confirm the newly introduced life limits by an entry in the list of life-limited parts and in the corresponding log cards before delivery of the helicopter.

Non-installed equipment:

Verify the life limit of the affected components/parts before their installation on the helicopter at the latest. Only components/parts may be installed which have **not** yet exceeded the newly introduced life limits.

1.E.2. Compliance in serviceHelicopters/installed equipment:

Confirm the newly introduced life limits by an entry in the list of life-limited parts and in the corresponding log cards within 4 weeks after receipt of this ASB.

Non-installed equipment:

Verify the life limit of the affected components/parts before their installation on the helicopter at the latest. Only components/parts may be installed which have **not** yet exceeded the newly introduced life limits.

1.F. APPROVALApproval of modification(s):

The information or instructions contained in this document refer to change no. 3671. The technical content of this document is approved by EASA.

1.G. MANPOWER

Not applicable.

1.H. WEIGHT AND BALANCE

Not applicable.

1.I. EFFECT ON ELECTRICAL LOADS

Not applicable.

1.J. SOFTWARE MODIFICATION EMBODIMENT RECORD

Not applicable.

1.K. REFERENCES

Not applicable.

1.L. DOCUMENTS AFFECTED

The changes to MSM MBB-BK117 C-2 will be incorporated with one of the next Revisions.

1.M. INTERCHANGEABILITY OR MIXABILITY OF PARTS

Interchangeability:

Not applicable.

Mixability:

Not applicable.

2. MATERIAL INFORMATION**2.A. MATERIAL: PRICE - AVAILABILITY - PROCUREMENT**

Not applicable.

2.B. INFORMATION CONCERNING INDUSTRIAL SUPPORT

Not applicable.

2.C. MATERIAL REQUIRED FOR EACH HELICOPTER/COMPONENT

Not applicable.

2.D. MATERIAL TO BE RETURNED

Not applicable.

3. ACCOMPLISHMENT INSTRUCTIONS

3.A. GENERAL

Not applicable.

3.B. OPERATIONAL PROCEDURE

3.B.1. Changes and entries

- (a) Confirm the newly introduced life limits by an entry in the list of life-limited parts and in the corresponding log cards of the components/parts.

Remark: See also Fig. 1, 2, 3, 4 and 5 for affected components/parts.

Main rotor head (62-21)

Disposition	Part number	Life limit entry	
		old	new
Nut	B622M1003201	83000 Flights or 12769 Fh	65800 Flights (10123 Fh) (2)(3)
Quadruple nut upper	B622M1004201	67000 Flights or 10308 Fh	60000 Flights (9230 Fh) (2)(3)
Quadruple nut lower	B622M1005201	67000 Flights or 10308 Fh	60000 Flights (9230 Fh) (2)(3)
Bolt	B622M1006201	35000 Flights or 5385 Fh	31200 Flights (4800 Fh) (2)(3)
Bolt	B622M1007201	35000 Flights or 5385 Fh	31200 Flights (4800 Fh) (2)(3)
Inner sleeve	B622M1009201 (1)	15000 Fh	13300 Fh
(1) The inner sleeve is only replaceable as an assy P/N B622M1009101. (2) The number of flights is to be considered equal to the number of landings (ground contacts). (3) For the calculation of the life limit the number of flights has priority. If the number of flights is not known, the flight hours in brackets must be used.			

Swash plate (62-32)

Disposition	Part number	Life limit entry	
		old	new
Control ring assy	B623M2001101	30000 Fh	27600 Fh

Rotor Flight Controls (67-10)

Disposition	Part number	Life limit entry	
		old	new
Bellcrank-K (collective)	B670M7021201 (1)	-	21500 Fh
(1) The bellcrank-K (collective) is only replaceable as an assy P/N B670M7021101 / B670M7021102.			

Cyclic Controls (67-12)

Disposition	Part number	Life limit entry	
		old	new
Control Rod Tube	B291M1015201	-	30000 Fh

Upper Controls (67-17)

Disposition	Part number	Life limit entry	
		old	new
Forked Lever	B671M7007201 B671M7007205	-	22500 Fh (1)
(1) Next higher assembly: Forked Lever Assy B671M7018102.			

3.C. IDENTIFICATION
Identification of this document:

Confirm accomplishment of this ASB by an entry in the historical record of the helicopter and in the log card of the respective components/parts.

Confirm in the helicopter delivery file:

Confirm changed life limits by an entry in the list of life-limited parts (part of the helicopter delivery file).

3.D. OPERATING AND MAINTENANCE INSTRUCTIONS
Flight Manual (FLM):

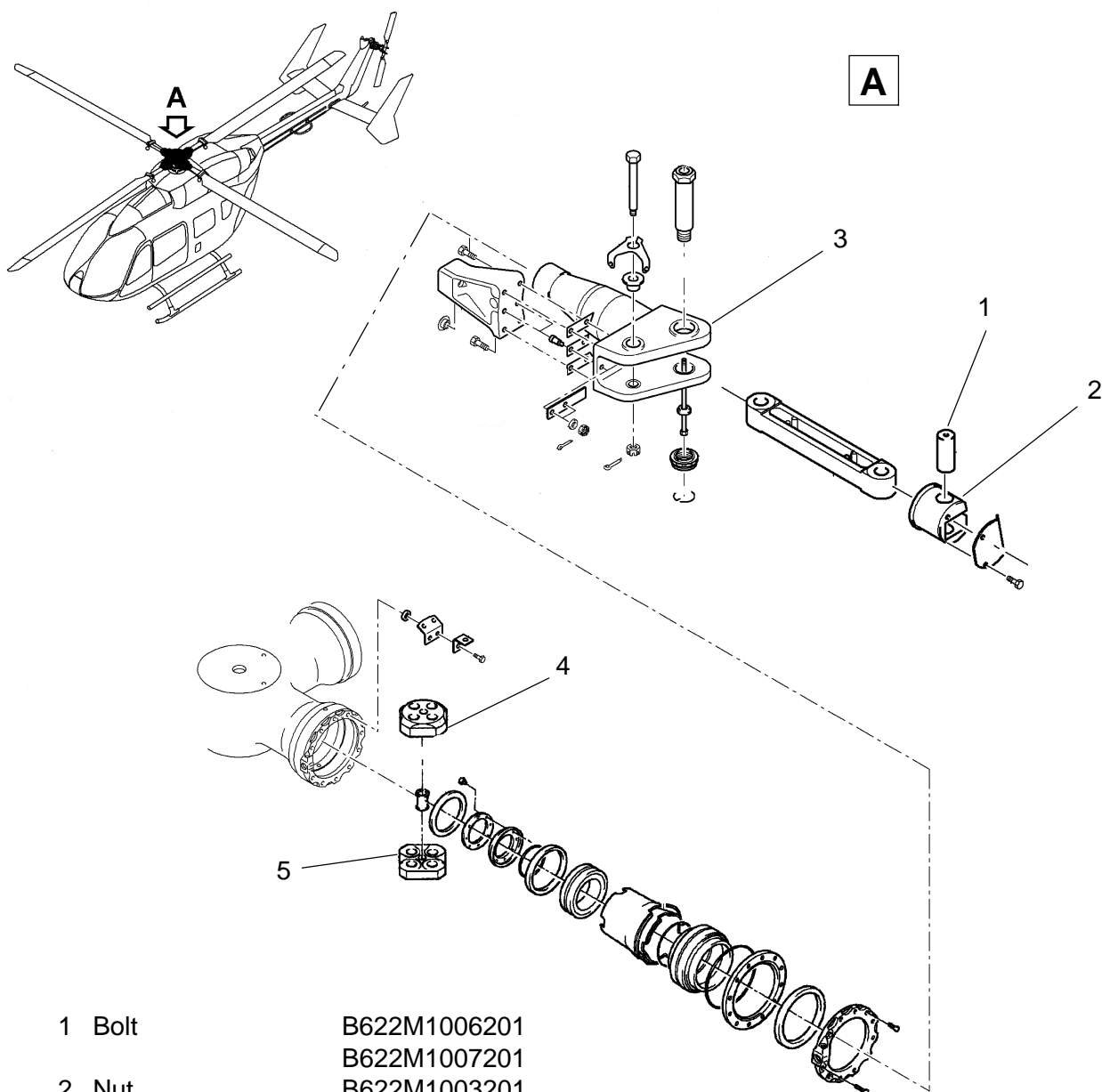
Not applicable.

Aircraft Maintenance Manual (AMM):

Not applicable.

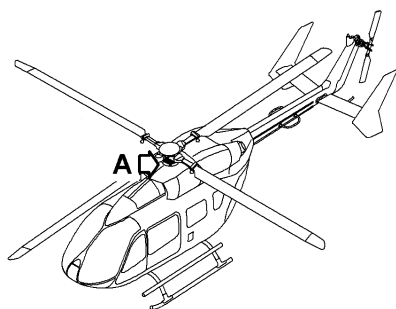
4. APPENDIX

Not applicable.

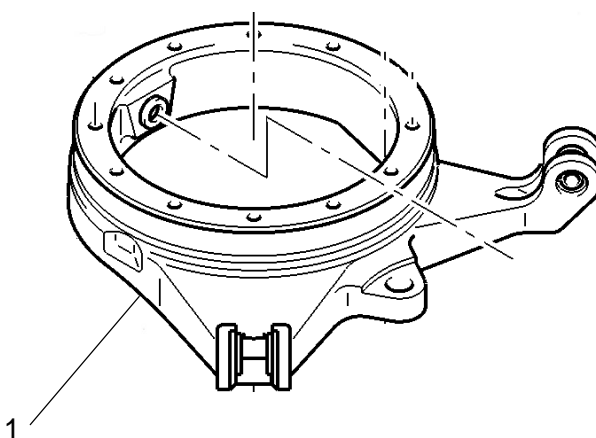


- | | |
|-----------------------|--------------|
| 1 Bolt | B622M1006201 |
| | B622M1007201 |
| 2 Nut | B622M1003201 |
| 3 Inner sleeve assy | B622M1009101 |
| 4 Quadruple nut upper | B622M1004201 |
| 5 Quadruple nut lower | B622M1005201 |

Main Rotor Head (62-21)
Figure 1



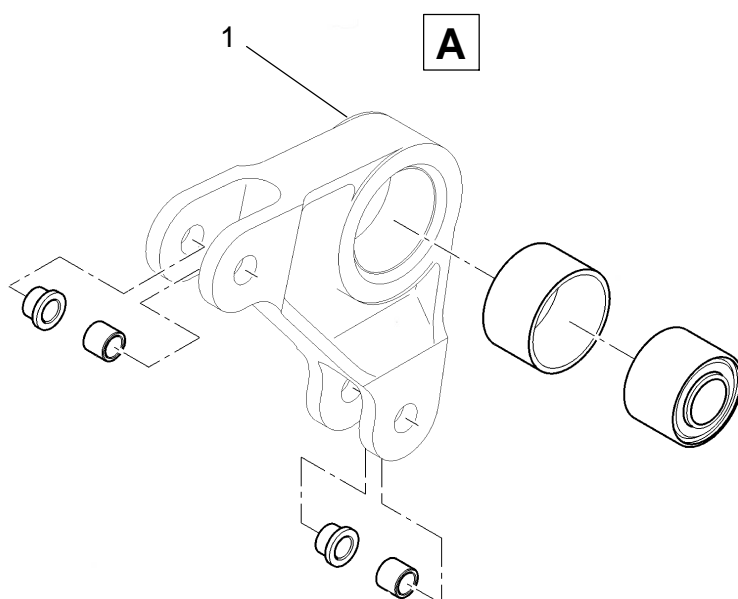
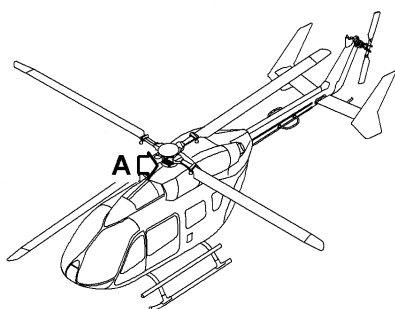
A



1 Control ring assy

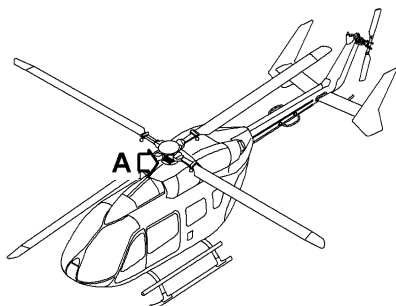
B623M2001101

Swash plate (62-32)
Figure 2

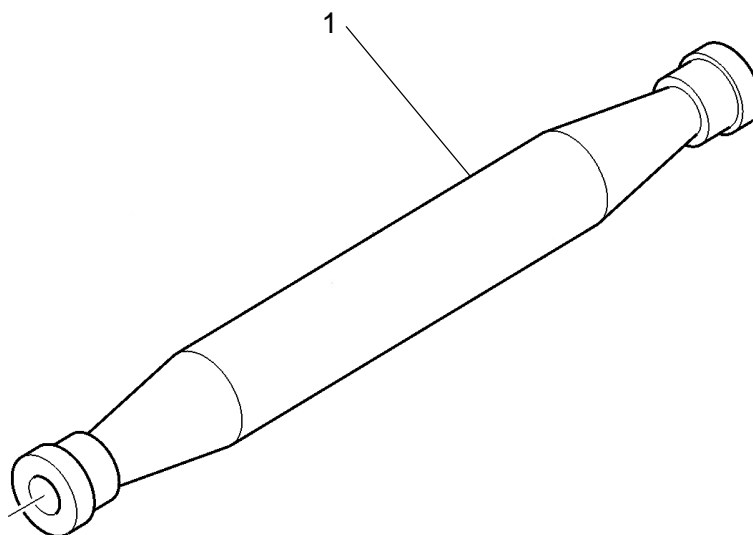


- | | |
|----------------------------|------------------------------|
| 1 Bellcrank-K (collective) | B670M7021101
B670M7021102 |
|----------------------------|------------------------------|

Rotor flight controls (67-10)
Figure 3



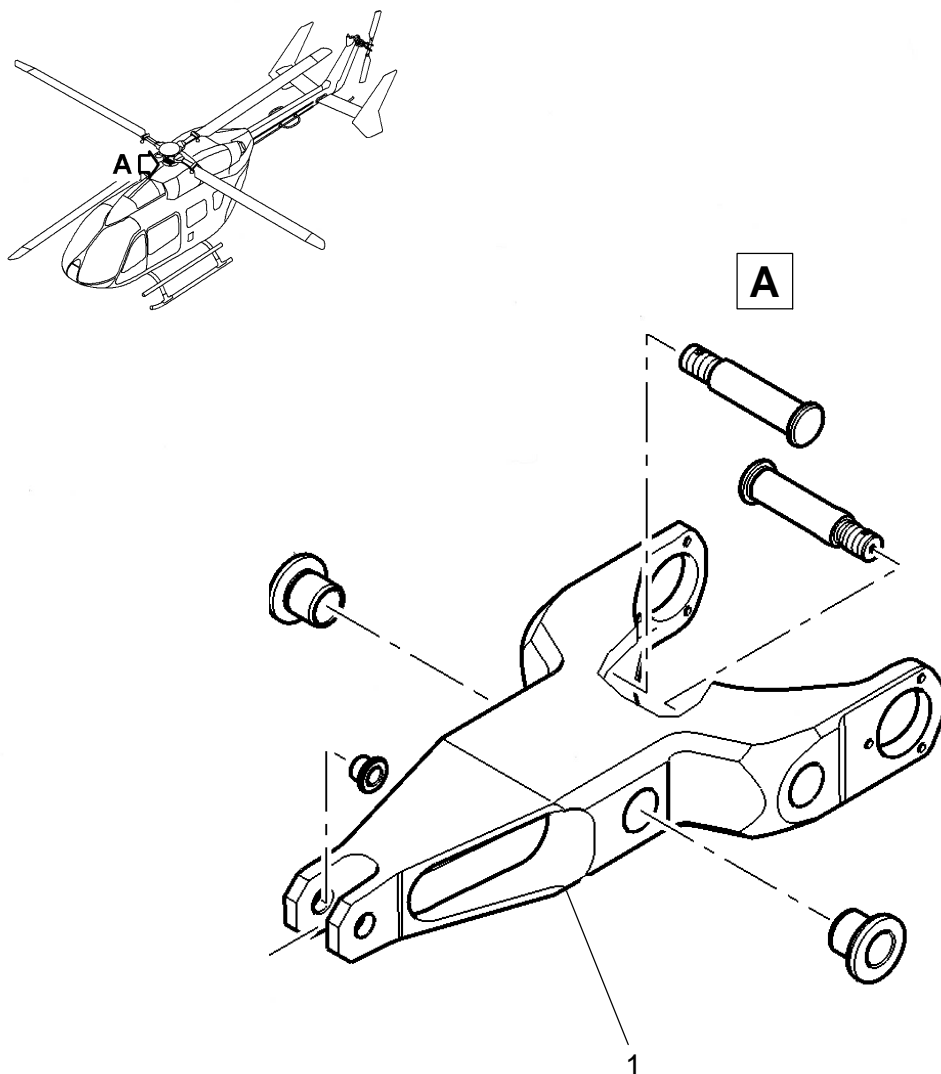
A



1 Control rod tube

B291M1015201

Cyclic controls (67-12)
Figure 4



1 Forked lever assy

B671M7018102

Upper Controls (67-17)
Figure 5